

# HAMPLUS

## **MBD-8G MBD-8F MBD-8E**

### **ROS-8 Remote Control Software**

RELEASE and RELEASE ALL commands



## **V. 1.0**



<http://www.hamplus.com>

## MBD-8 Remote Control Software

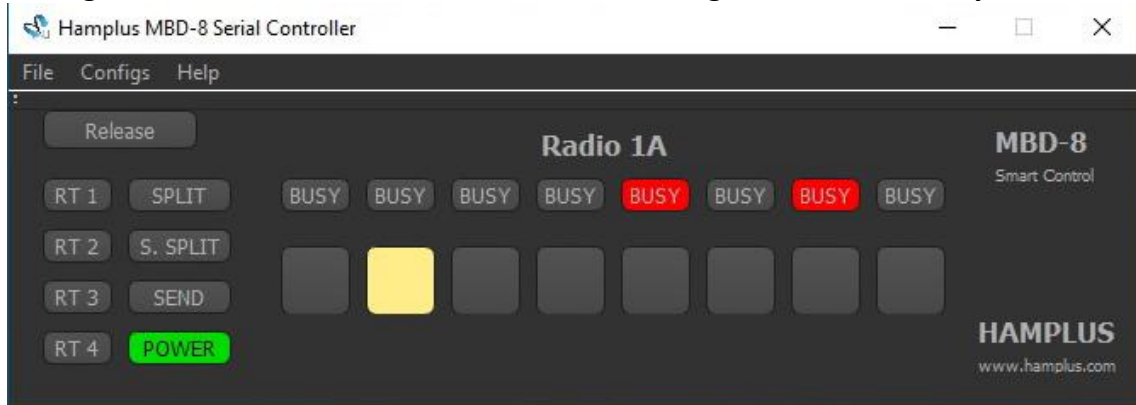
### RELEASE and RELEASE ALL commands

The **ROS-8** (Serial Remote Control) remote control software works with any of the **MBD-8** models. All models can be placed in the same group. MBD-8E, MBD-8F and MBD-8G.

If only one of the **MBD-8** is connected to the **PC**, it can **“RELEASE”** the antennas only on it, or on all **MBDs** that are connected via the **BUSY** network.

To choose the operating mode for the **“RELEASE”** command, you must configure this command.

The figure below shows the **RELEASE** command configured to release only this **MBD-8**



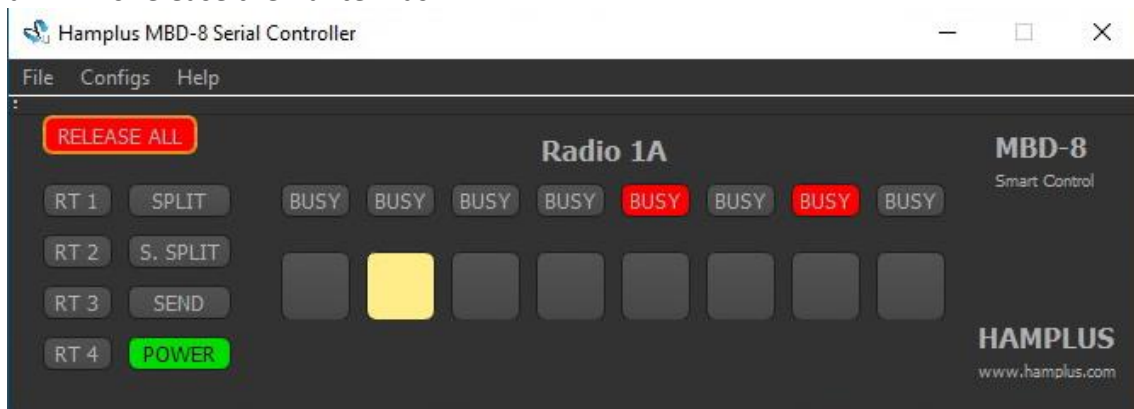
The figure below shows the **MBD-8** after activating the **RELEASE** command. Note that there is no activated antenna, only the **BUSY** indication on antennas 5 and 7 are being shown. This is because only this **MBD-8** released the antennas.



The figure below shows where to configure the **RELEASE** command to **release all MBDs** that are connected to the same **"BUSY"** network.



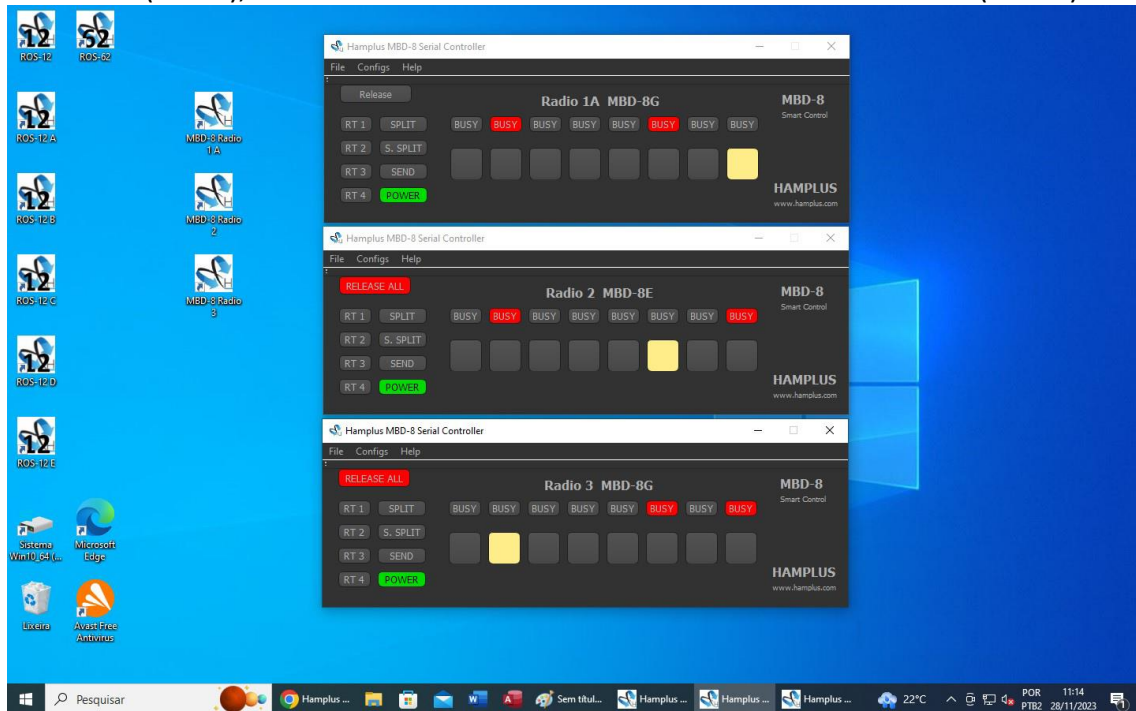
The figure below shows the **RELEASE ALL** Command activated (it is in red). **When activated, all MBDs release their antennas.**



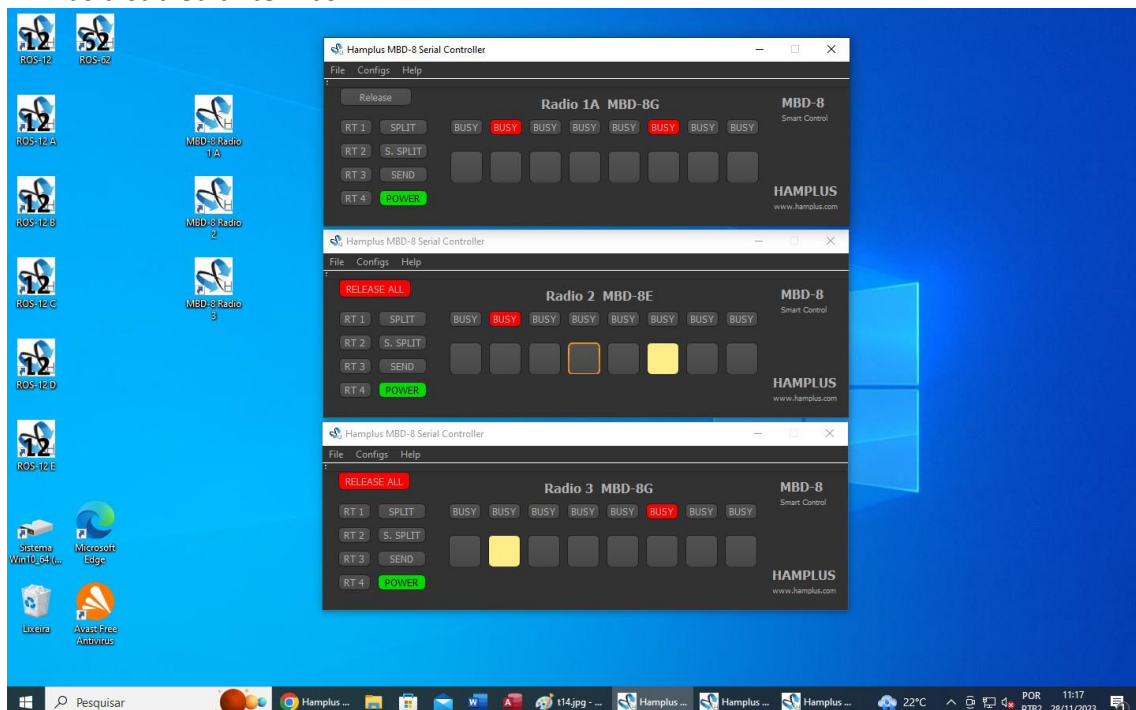
The figure below shows the **MBD-8** after the **RELEASE ALL** command has been activated. Note that **there is no indication of BUSY or Connected Antennas.**



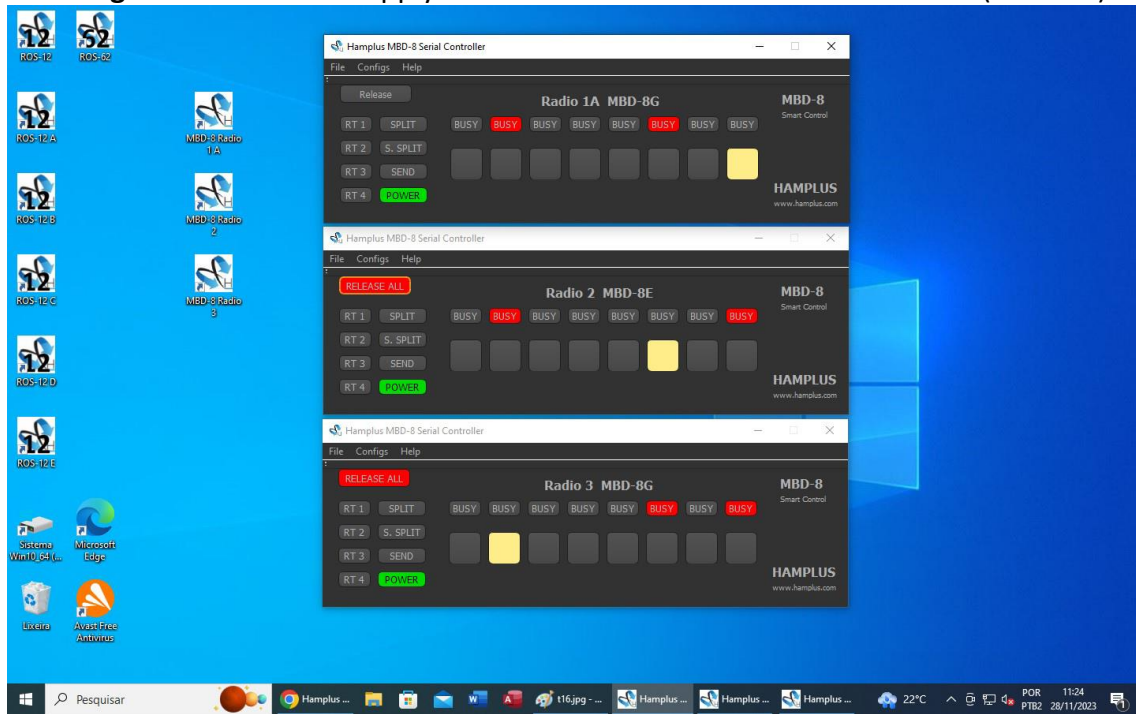
The figure below shows the screen of a PC with three MBDs connected. To do this, the PC needs to have three Serial ports. You can connect six radios if you put six Serial ports. Note that Radio 1A has an MBD-8G in RELEASE mode, Radio 2 has an MBD-8E in RELEASE ALL mode (in red), and Radio 3 has an MBD-8G also in RELEASE ALL mode (in Red).



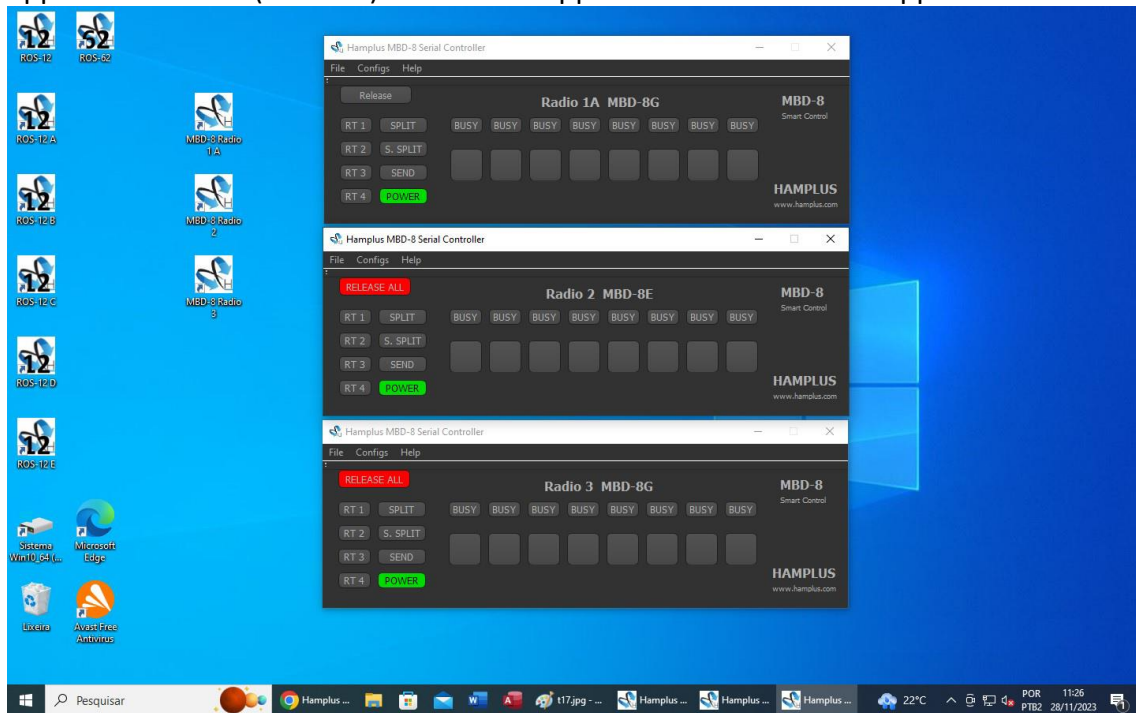
In the figure below, the RELEASE command was applied to Radio 1A. Note that only Radio 1A has disabled antennas.



In the figure below we will apply the “RELEASE ALL” command on Radio 2 (MBD-8E)



The figure below shows all Antennas deactivated after the “RELEASE ALL” command is applied to Radio 2 (MBD-8E). The same happens if the command is applied to Radio 3







# ROS-8

NOVEMBER 29, 2023

HAMPLUS.COM

Rua Joe Collaço, 954 - Florianópolis - Brazil